

# Shapley-Sawyer Concentration Class for Globular Clusters

---



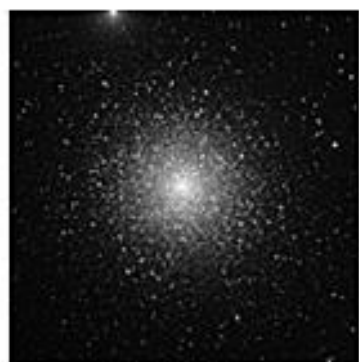
**CLASS 1**



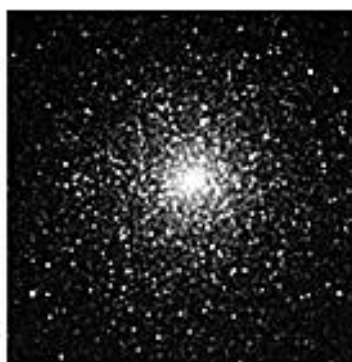
**CLASS 2**



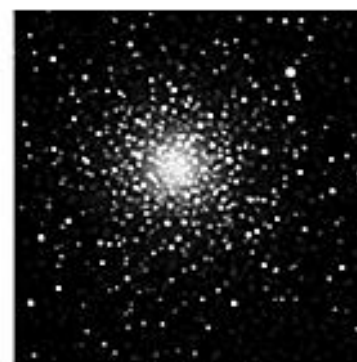
**CLASS 3**



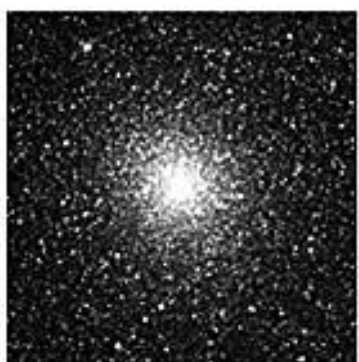
**CLASS 4**



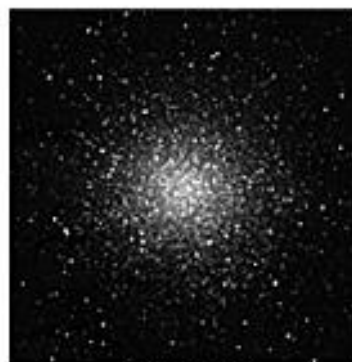
**CLASS 5**



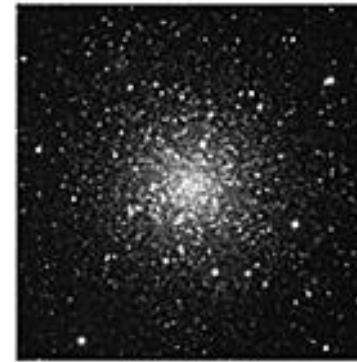
**CLASS 6**



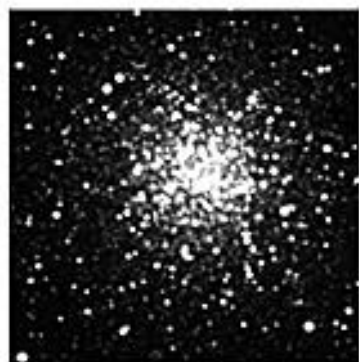
**CLASS 7**



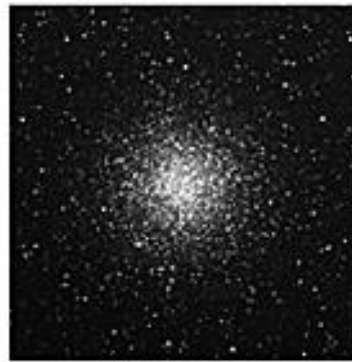
**CLASS 8**



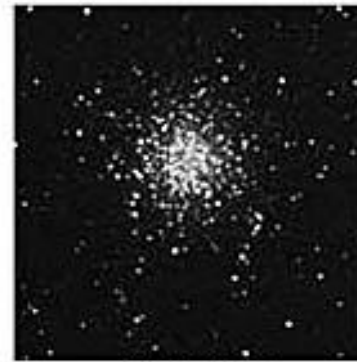
**CLASS 9**



**CLASS 10**



**CLASS 11**



**CLASS 12**